

Anderson Public School Return to Learn Plan



2022-2023

Anderson Public School Return to Learn Plan

*These guidelines were developed to provide the safest possible school environment for students and staff and to comply with federal funding requirements. All updates will be based on the most current information provided by the Centers for Disease Control and Prevention, the Oklahoma State Department of Health, the Tulsa Health Department, and current district and community Covid-19 data.

In developing this plan for reopening school, key guidance documents from federal, state, and local entities, including the U.S. Centers for Disease Control and Prevention (CDC), the Oklahoma State Department of Education (OSDE) Return to Learn, the Osage County Health Department, and the OSDE's COVID-19 Frequently Asked Questions were utilized. The district is using this framework to reopen schools in August 2021 while prioritizing the health and safety of Oklahoma students, staff and families. Considerations in this document are not intended to replace our district's emergency or crisis safety plan and are not an exhaustive list of the health and safety needs to be considered.

CDC Recommendation 9: Coordination with State and local health officials

COVID-19 PROTOCOL

DAILY SCREENING

1. It is recommended that students are screened at home using the provided checklist. If a student is experiencing a fever of 100.4°F or higher, or any of the other COVID-19 symptoms on the checklist, then he/she should not be sent to school.
2. Staff should also screen themselves at home using the provided checklist. If a staff member is experiencing a fever of 100.4°F or higher, or any of the other COVID-19 symptoms on the checklist, then he/she should not come to school.

CDC Recommendation 6: Diagnostic and screening testing

PROCEDURES FOR WHEN A STUDENT OR STAFF BEGIN EXHIBITING A SYMPTOM DURING THE SCHOOL DAY

Anderson Public School Return to Learn Plan

Isolation Room: Any student or staff member who exhibits a fever of 100.4°F will be instantly isolated in a predetermined isolation room and immediately sent home. After being sent home, the student or staff member cannot return to school until one of the following criteria is met:

- Without COVID testing, the student or staff member must not be present at school for 10 days AND 24 hours with no fever.
- After a negative COVID test, the student or staff member can return to physical school after 24 hours of being fever free with no fever reducing medication.
- The student will become a distance learner at home until he/she can return to school.
- The student will be counted as present because digital learning will be provided.

POSITIVE CASE

1. Consult with the Osage County Health Department.
2. Communicate to staff that a positive case has occurred.
3. Communicate with applicable parents depending on classroom arrangement.
4. Thoroughly sanitize the classroom.
5. Positive case classroom **may** go to distance learning for 7 or 10 days while those students are quarantined. If the student has siblings, the siblings **may** be quarantined. ****Note**** Quarantine will be 7 days if student(s) receive negative COVID test results; it will be 10 days if no COVID test is taken.
6. If the attendance of campus learners at the site and/or district where the positive case occurs reaches a 35% absenteeism rate, the site and/or district will go to distance learning for 10 days. The count starts on the first day of distance learning.
7. Grab and Go meals will be provided daily starting on Day 1 of distance learning for the remainder of that week. Delivery schedule will be dictated by the district's Child Nutrition capabilities.

CDC Recommendation 5: Contact tracing in combination with isolation and quarantine, in collaboration with the State, local, territorial, or Tribal health departments.

BUS TRANSPORTATION

1. It is recommended that parents transport their children to and from school.
2. Masks are encouraged, but not required for students on buses.
3. On buses, maximize air flow by having windows down when possible.

Anderson Public School Return to Learn Plan

4. Students within the same household will sit together; social distancing will be practiced as much as possible and be practical.

CDC Recommendation 2: Modifying facilities to all for physical distancing

CHILD NUTRITION SERVICES

1. If the district enters into a time of quarantine, child nutrition services will be provided through a Grab and Go service.
2. Breakfast and lunch will be provided at the main entrance following the main drop-off procedure between 8:30 and 9:30 a.m. Monday through Thursday. Students on bus routes will be delivered meals upon request of the parents.
3. On regular school days, the following protocol will be used to minimize large gatherings of students with the school cafeteria:
 - Pre-Kindergarten through Eighth grades-For breakfast, students will pass through the serving line one at a time to make food selections. Breakfast will be consumed in the cafeteria, while students are socially distanced at tables. For lunch, students will pass through the serving line one at a time and seating in the cafeteria will accommodate CDC guidance as much as possible and is practical.

CDC Recommendation 2: Modifying facilities to all for physical distancing

PROCEDURES DURING THE SCHOOL DAY

IN THE CLASSROOM:

1. Maximize classroom space to accommodate for social distancing
2. **Masks and/or face shields are optional for teachers and staff. Masks are optional** for students. However, this is a fluid situation, and if the health conditions within the district increase to the point that it becomes necessary for students and staff to wear masks, the district may reinstate the requirement to wear a mask. Exception: If a student or staff member has a documented medical condition, which precludes the wearing of a mask.

IN THE HALLWAY:

1. **Lockers:**
Pre-K and Kindergarten - school supplies will not be shared to the best of our ability.
First and Second and Fifth through Eighth grades - Backpacks will be kept in lockers. All supplies will be left in the classroom each morning. Lockers will not be visited during the day other than first thing in the morning and

Anderson Public School Return to Learn Plan

when it is time to go home. Those times will be staggered so as to not cause congestion in the hallway.

Third and Fourth will use their cubbies in the classroom.

2. Passing in Hallway:

PK through Eighth grades - When students are in the hallway social distancing will be practiced as much as possible and is practical

SANITIZING/CLEANING/PERSONAL HYGIENE:

Promote Culture of Good Hygiene Practices: Anderson Public School will ensure each classroom a sufficient supply of supplies needed for maintaining sanitary conditions, such as but not limited to, hand sanitizer, clorox wipes, cleaner, and sanitizing spray. We will ensure an ample supply of hand soap and paper towels are available to maintain proper hand washing techniques. We will promote good hygiene practices such as coughing and sneezing etiquette, keeping hands away from face, and proper hand washing will be emphasized. A school culture of good handwashing and hand sanitization will be promoted and enforced.

CDC Recommendation 3: Handwashing and respiratory etiquette

School Cleaning Practices: Anderson Public School will work diligently with our maintenance staff and suppliers regarding the proper use of sanitizers. Cleaning and disinfecting high-touch surfaces, such as doorknobs, bathrooms, countertops, and handrails as much as possible throughout the school day. Classrooms will be sanitized every evening before the teacher leaves the building, and more frequently if the class will be out of the room for a period of time that will allow for drying of surfaces. Appropriate training will be provided to all staff on improvised cleaning routines.

CDC Recommendation 4: Cleaning and maintaining healthy facilities, including improving ventilation

VISITORS TO THE SCHOOL

School visitors will have very limited access inside the buildings during the school day. Each visitor should ring the doorbell at the main entrance of each building. The building secretary will answer the bell and ask each visitor the purpose of their visit. If business can be conducted at the door, then access will not be granted. If the visitor's business must be conducted inside the school, then the visitor's temperature will be taken **and they will wear a mask to enter the building.**

CDC Recommendation 1: Universal and correct wearing of masks

Anderson Public School Return to Learn Plan

POLICIES REGARDING SCHOOL BUILDING USE FOR NON-SCHOOL FUNCTIONS

Depending on the level of community spread within school district boundaries, Anderson Public School may consider closing buildings and other facilities to outside groups and activities to reduce potential for spreading the virus. If outside groups are using the building, they will be charged by the school for appropriate cleaning and disinfecting after they leave. Existing agreements for the use of school facilities will be updated to include social distancing requirements, appropriate hygiene measures and cleaning and sanitizing requirements after the activity is complete. The school will work to ensure HVAC systems are working properly and increase the circulation of outdoor air as much as possible.

VACCINATION CLINICS

The district will host vaccination clinics for school staff when available. The district will advertise, send flyers home, or other materials about area vaccination clinics for staff and students when asked to do so by the county or state health officials.

CDC Recommendation 7: Efforts to provide vaccinations to school communities

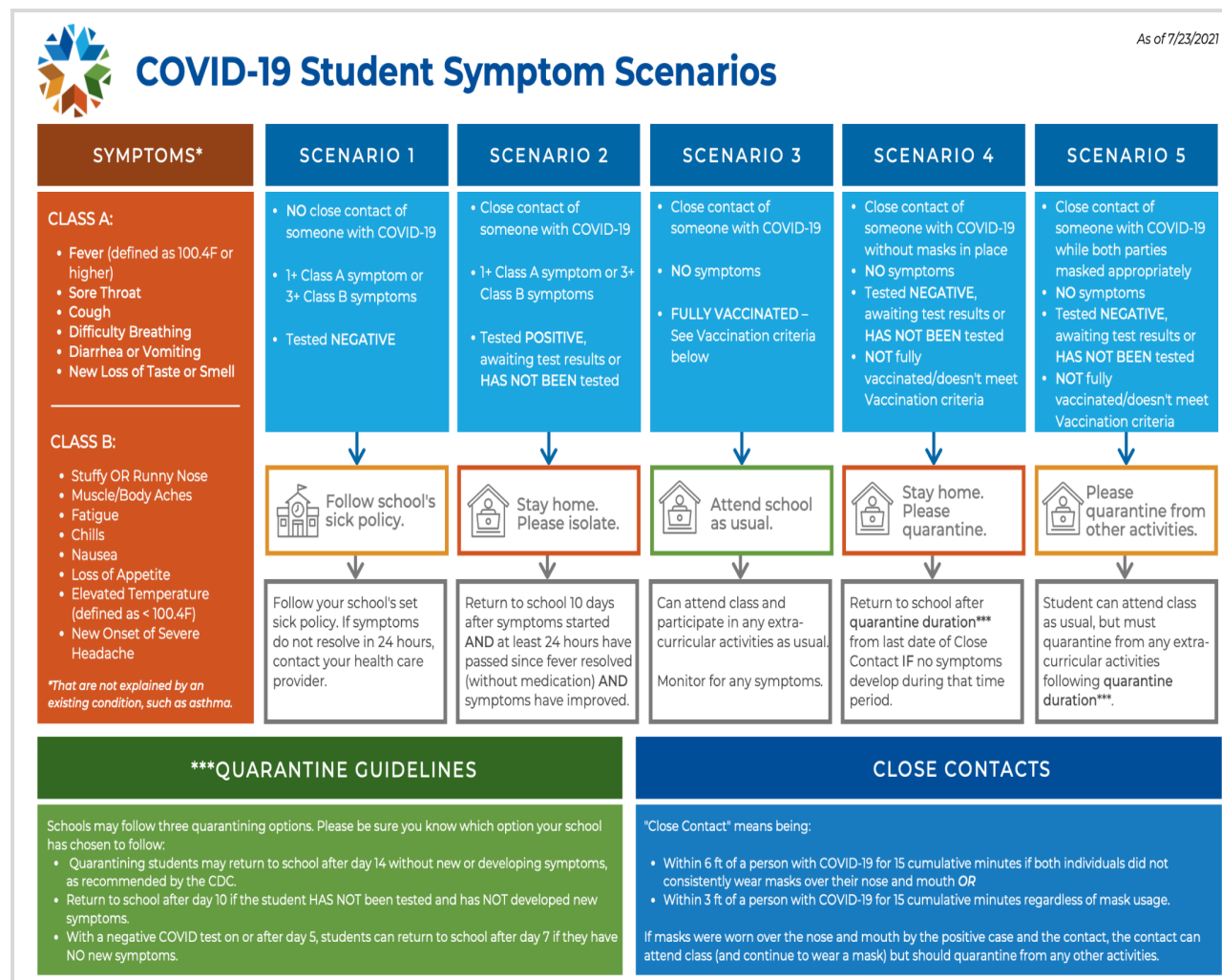
SERVICES For STUDENTS WITH SPECIAL NEEDS

Services for students with special needs will continue as normal throughout the school day. In times that the school may have to put a single classroom or entire building on quarantine due to an outbreak or exposure of COVID-19, students with special needs may continue to receive educational services in person, virtually, or a combination of both, depending on the unique circumstances of each student and the availability of school staff. Parents will be contacted to discuss the options for their child. Accommodations and modifications as outlined in the child's Individualized Educational Plan (IEP) will be followed in all academic settings.

CDC Recommendation 8: Appropriate accommodations for children with disabilities with respect to health and safety policies

Anderson Public School Return to Learn Plan

OKLAHOMA STATE DEPARTMENT OF HEALTH RESOURCE WE USE TO DETERMINE IF A STUDENT OR STAFF MEMBER NEEDS TO QUARANTINE.



Anderson Public School Return to Learn Plan

Dear Parents,

The safety of your child and our staff is of utmost importance as we return to school. During the school year, we are asking you to daily check your child for signs of COVID-19. Below is a checklist of statements you may use as a reference. If your child exhibits any of the following signs, indicating by answering yes to the questions below, please keep them at home. This checklist must be used separately for each child attending school from your household.

- _____ 1. Does your child have a temperature of 100.4 degrees or more today?
- _____ 2. Does your child have a sore throat?
- _____ 3. Does your child have a cough?
- _____ 4. Does your child have a loss of smell or taste?
- _____ 5. Does your child have shortness of breath?
- _____ 6. Does your child have close contact with a positive COVID case?

By sending your child(ren) to school, you agree the answer to each of the statements above is "No."

Anderson Public School Return to Learn Plan